

ADDENDUM A – Maps & Locations

Severe Weather Plan

If severe weather is spotted in the area or the Civil Defense siren sound, follow these procedures:

- 1) Proceed calmly to the Clothing Storage Room, located in the middle of the building on the lower level. Elevator use is not permitted during severe weather.
- 2) Remain there until the severe weather has dissipated and the Incident commander gives the all clear to return to workstations.

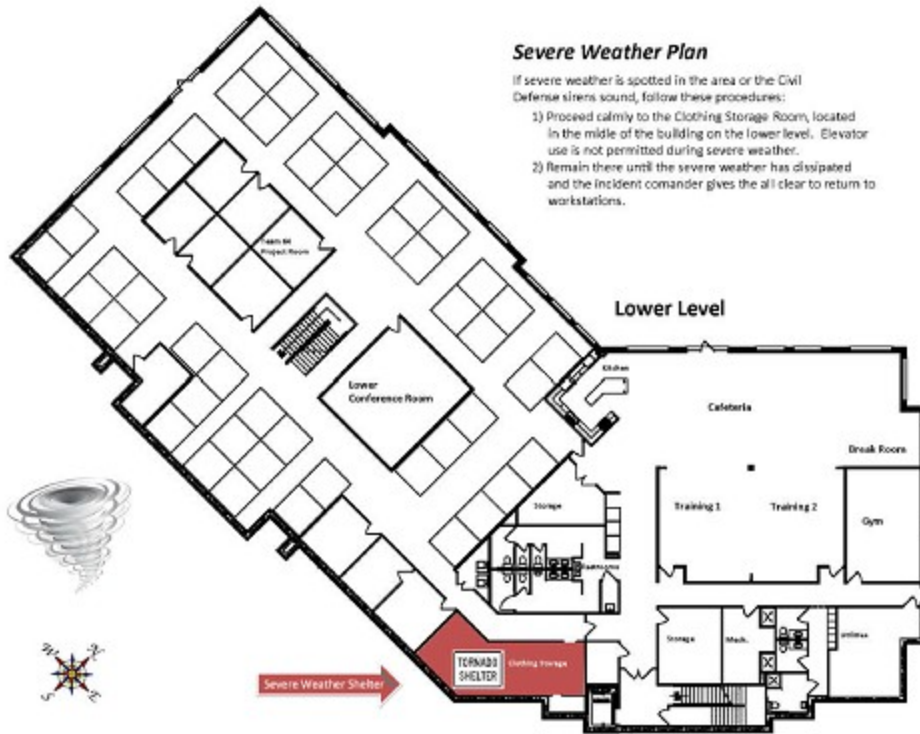


Diagram A-1

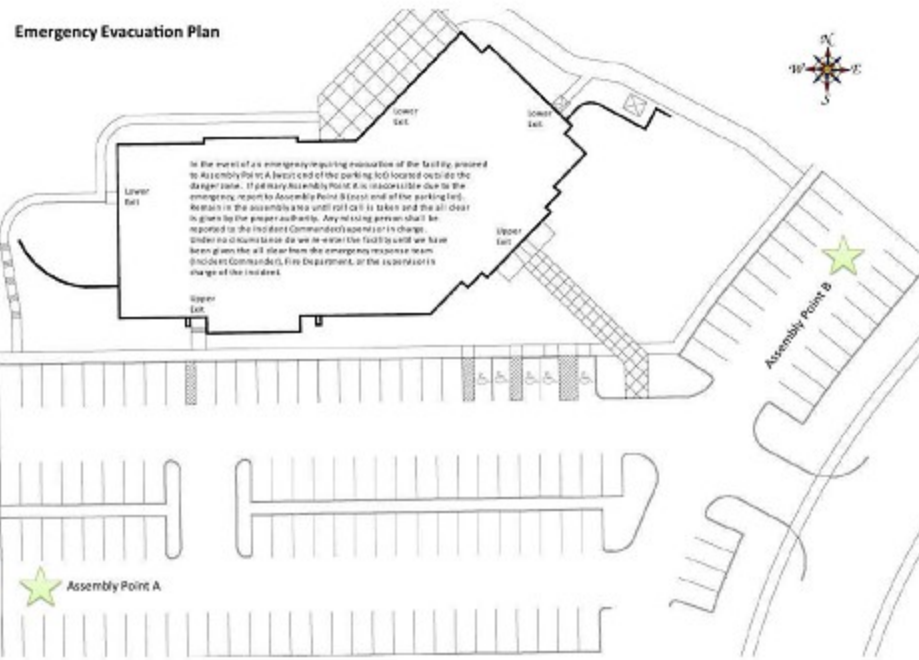


Diagram A-2



Diagram A-3

EMERGENCY EVACUATION MAP

357 S. McCaslin Blvd., Suite 200
Louisville, CO 80027

 **YOU ARE HERE!**

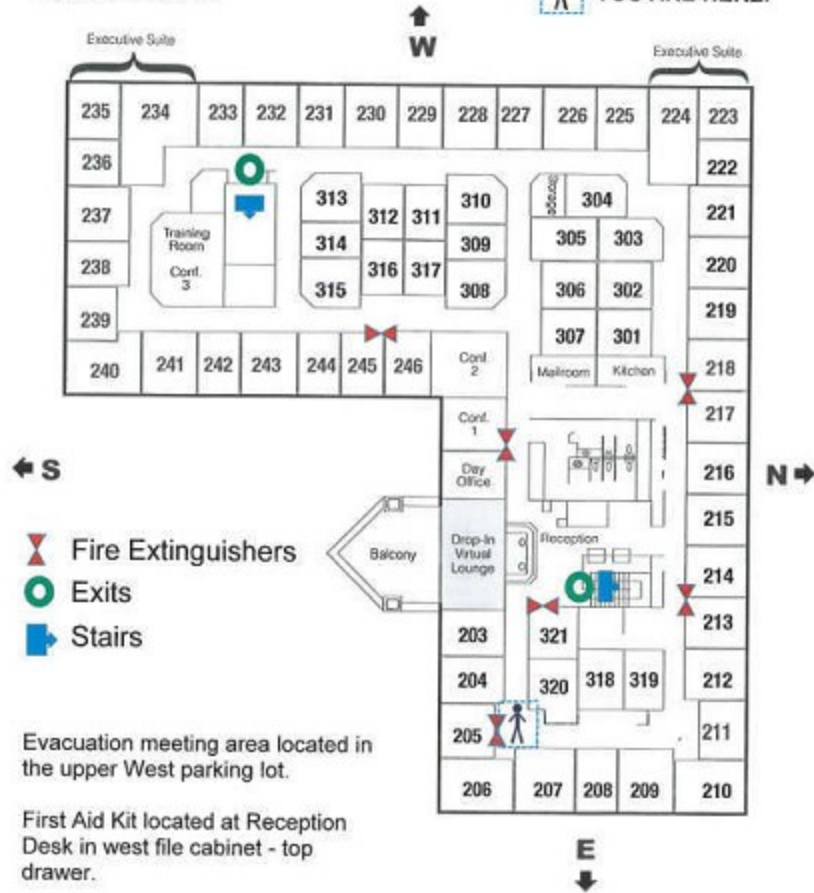


Diagram A-4